

Leading the New Intelligent Manufacturing Era

INTERNATIONAL ELECTRONICS CIRCUIT EXHIBITION (SHANGHAI)

2019.3.19-21

National Exhibition and
Convention Center (Shanghai)



CPA
SHOW

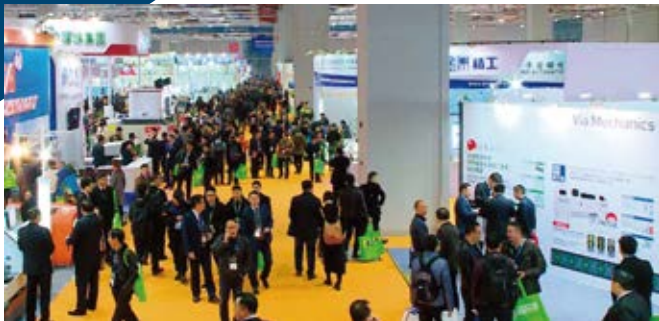


Extra Exhibition: International Water Treatment & Cleanrooms Exhibition



GENERAL INFORMATION

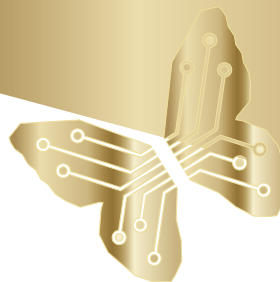
Name International Electronics Circuit Exhibition (Shanghai)
Dates March 19-21, 2019
Venue National Exhibition and Convention Center (Shanghai)



International Electronics Circuit Exhibition (Shanghai) will be held in Shanghai National Exhibition and Convention Center from 19 to 21 March 2019. For the first time, the exhibition area of this exhibition has exceeded 50,000 square meters. More than 700 exhibitors has participated in the exhibition. The exhibition attracts many global leading PCB and Electronic Assembly manufacturers in the Electronic Circuit Manufacturing industrial chain. During the exhibition, there will be more than 70 summit forums, new product and technology release conference and related activities. More than 50,000 professional spectators are expected to attend the exhibition.

Organizer China Printed Circuit Association (CPCA)
Hong Kong Printed Circuit Association (HKPCA)
Exhibition Manager Shanghai YingZhan Exhibition Service Co., Ltd.
Government Support China Ministry of Industry and Information
Co-organizers World Electronic Circuits Council (WECC)
China Electronic Components Association
China Semiconductor Industry Association
China Surface Engineering Association (CSEA)
China Institute of Electronics, China Contamination Control Society
Shanghai Association on Water Purification Technology
Shanghai Environment Protection Industry Association

EVENTS



Opening Hours

09:00 – 16:30 TUE, March 19, 2019
09:00 – 16:30 WED, March 20, 2019
09:00 – 15:30 THU, March 21, 2019

Opening Ceremony

09:30 – 10:00 TUE, March 19, 2019
National Exhibition and Convention Center (Shanghai)
South Entrance Hall

Opening Reception

18:00-20:30 TUE, March 19, 2019
National Exhibition and Convention Center (Sehanghai)
- Intercontinental Shanghai
* Admission by invitation only.

Seminar/New Product

Technology Conference 13:00 – 17:00 TUE, March 19, 2019
10:00 – 16:30 WED, March 20, 2019
10:00 – 12:00 THU, March 20, 2019
National Exhibition and Convention Center (Shanghai)
M704 Meeting Rooms

2019 Spring International PCB Technology/ Information Forum

March 19, 2019
March 20, 2019

Forum Topic

Leading the New Intelligent Manufacturing Era
Forum opening special guest speech

More details please contact: www.cPCA.org.cn
Tel:+86-21-54179011
E-mail:academy@cpca.org.cn

LOCATION MAP

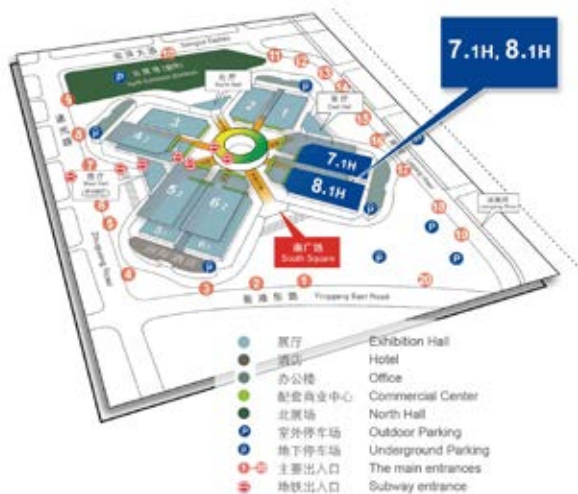


National Exhibition and Convention Center (Shanghai)

South Entrance: 168 East Yinggang Rd.
North Entrance: 333 Songze Ave.
East Entrance: 111 Laigang Rd.
West Entrance: 1888 Zhuguang Rd.



Please enter the center via East Entrance GATE 18, 111 Laigang Rd if you are self-driving.



TRAFFIC GUIDE



Aircraft

NECC is only 1.5 kilometers away from Hongqiao Airport terminal and about 60 kilometers from Pudong Airport. NECC can be directly accessed by Metro Line 2 from both airports.



Train & Metro

NECC is only 1.5 km from Shanghai Hongqiao Railway Station and it is connected by Metro Line 2. NECC is 25 km from the Shanghai Railway Station, and 23 km from Shanghai South Railway Station. If you travel from these locations, please take Metro line 1 to the People's Square Station, then transfer Metro Line 2 to access the NECC directly.



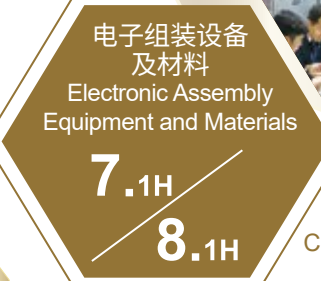
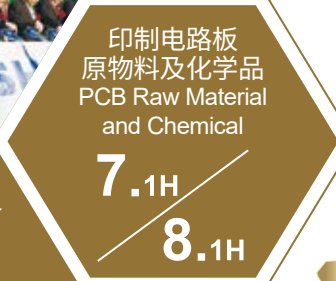
Self-driving

The venue is situated at 333 Songze Avenue (Please enter the center via East Entrance GATE18 111 Laigang Rd if you are self-driving.)



Parking

Parking spaces: 5050 in total Parking fee: 6 Yuan/hour, 48 Yuan maximum/day. This rate applies to cars or other light vehicles.



VISITOR REGISTRATION



For pre-registrations, please visit www.cpcashow.com or exhibition official wechat: E-dynasty. You will have a chance to win a special prize and be selected to become a special guest to use exhibition VIP lounge for free with complimentary beverage and snacks.



Follow us on WeChat
Get more information



Lucky Draw

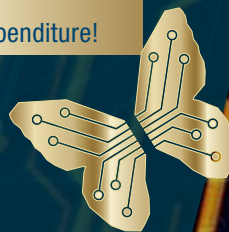
All registered professional spectators will receive a lottery ticket. Please hold the lottery ticket and stamp it at the designated positions of 7.1H and 8.1H in the exhibition hall. If you collect the seals, you can get them free of charge with your business card and sealed tickets .

- Buyer' s Guide - Special Prize

Advertising Sponsorship Scheme

Get more exposure opportunities with a small amount of expenditure!

- Buyer' s Guide
- Visitor's Guide & Tickets
- Visitor Badge
- Show Bags
- Official Website
- Official WeChat
- Flags & Maps
- Lucky Draw Gift
- Bottled Water
- Free Wifi Area
- Vip Room
- The Opening Reception & Seminars



For more information or other service, just feel free to contact the organizer:



上海颖展展览服务有限公司

Shanghai Ying Zhan Exhibition Service Co., Ltd.

Tel: +86-21-54900077 Fax: +86-21-54904537

E-mail: cpcashow@ying-zhan.com

QQ: 800 055 702 Wechat: e-dynasty

Website: www.cpcashow.com